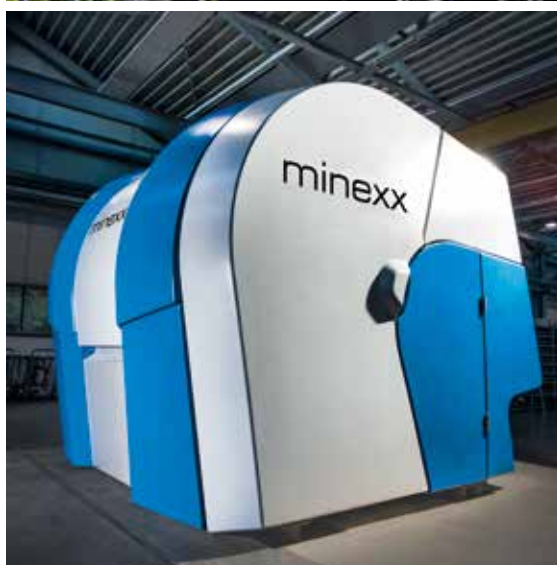


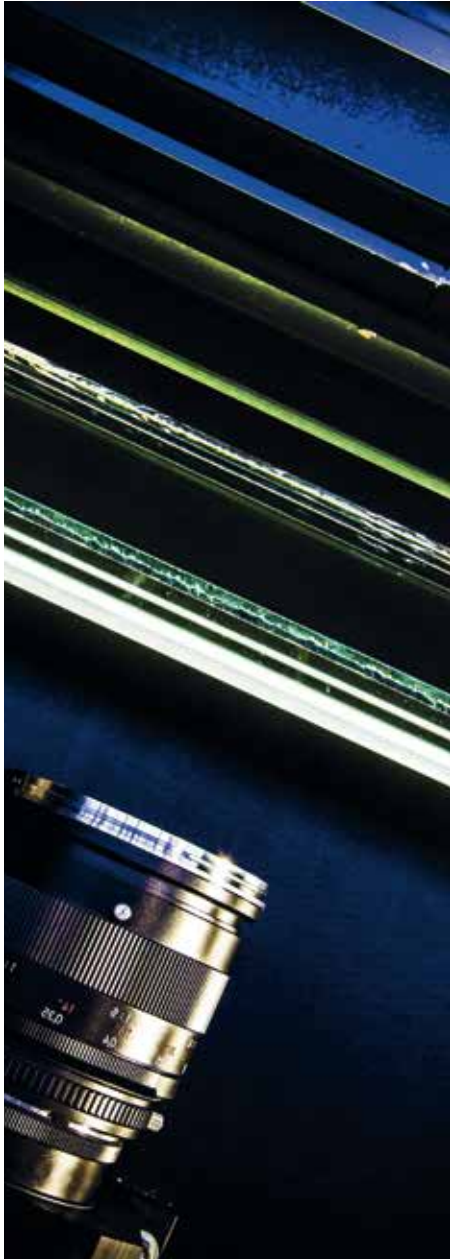
**WE
PROCESS
THE
FUTURE**

binder+co



**SENSOR-BASED
SORTING TECHNOLOGY
WITH HIGHEST PRECISION**

**WE
PROCESS
THE
FUTURE**



PROCESSING VALUABLE RESOURCES CAREFULLY WITH INNOVATIVE SOLUTIONS.

The Binder+Co group's machines and systems create the ideal basis for the efficient preparation and sustainable conservation of valuable resources from primary and secondary sources. Founded in 1894 as a machining company, today Binder+Co is the world leader in processing glass cullet and sorting hard-to-screen bulk materials.

Our understanding of the interplay between these steps enables us to provide excellent custom-configured solutions that give customers decisive competitive and technical advantages. This deep knowledge of the individual process steps has made Binder+Co a leading manufacturer of waste glass processing systems.

With machines for six process steps – crushing – screening – wet processing – thermal processing – sensor-based sorting – bagging and palletizing – we offer customers a high level of process expertise and an extensive product range from a single source.



RELIABLE
CRUSHING



EFFICIENT
SCREENING



WET
PROCESSING



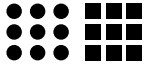
THERMAL
PROCESSING



SENSOR-BASED
SORTING



BAGGING
PALLETIZING



SENSOR-BASED SORTING

Sensor-based sorting technology from Binder+Co ranges from individual machines to complete turnkey processing installations. The right system design and conditioning of the input material are essential to the success in sensor-based sorting that Binder+Co is known for worldwide.

GLASS

- Sorting by color
- Pure color fractions
- Contaminant removal: metal, ceramic, stone, porcelain, glass ceramic, leaded glass
- Fines sorting
- Quality analysis



PAPER

- Sorting by color
- Contaminant removal



PLASTIC

- Pure recyclable fractions
- Sorting by color
- Contaminant removal
- Material sorting
- Quality analysis



WE SORT

GEMS

- Sorting by color
- Sorting by inclusions



C&D WASTE

- Sorting by material and color
- Pure brick and concrete fractions
- Contaminant removal
- Recovery of metals and glass



ORES

- Ore presorting
- Higher ore concentrations



For years now, Binder+Co has been the world leader in the sorting of transparent and non-transparent bulk goods. Our innovations in sensor-based sorting have won us multiple awards. We offer the entire processing solution from a single source, from mechanical material conditioning to sensor-based sorting. Our customers' requirements are always the first priority as we work to give you a competitive and technical edge.

ELECTRONIC WASTE & METALS

- Material sorting
- Contaminant removal



MUNICIPAL SOLID WASTE

- Material sorting
- Contaminant removal: metal, glass, PVC



IT ALL!

SALT

- Sorting by color
- Sorting by inclusions
- Contaminant removal



INDUSTRIAL MINERALS

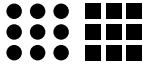
- Impurities removal and material recognition
- New and different product grades
- Quality assurance



COAL

- Stone removal
- Higher caloric value





CHUTE SORTING SYSTEMS



CHUTE SORTING SYSTEMS

- Two- and three-way sorting
- Lighting and sensor systems for transmission and reflection processes: VIS, NIR, UV and induction
- Sorting widths up to 2000 mm
- Grain sizes from 1 to 300 mm

APPLICATIONS

- Raw materials industry: Industrial minerals, salts, gems, non-ferrous and precious metal ores
- Recycling industry: Cullet, plastic, electronic waste, metals, slag and C&D waste

SORTING BY

COLOR (VIS):	To get different color grades and products To remove contaminants and impurities Sorting by transparency
SHAPE (VIS):	Sorting by size ratios
FLUORESCENCE (UV):	Sorting of leaded glass, glass ceramic, gems and minerals
TYPE OF MATERIAL (NIR):	Sorting by material to remove contaminants or to get specific products

BELT SORTING SYSTEMS



BELT SORTING SYSTEMS

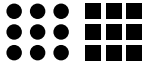
- Two-way sorting
- Lighting and sensor systems for transmission and reflection processes: VIS, NIR, induction and XRT
- Sorting widths up to 2800 mm
- Grain sizes from 1 to 420 mm

APPLICATIONS

- Raw materials industry: Non-ferrous and precious metal ores, industrial minerals
 - Recycling industry: Paper, plastics, refuse-derived fuels, municipal solid waste wood
-

SORTING BY

COLOR (VIS):	To get different color grades and products To remove contaminants and impurities
SHAPE (VIS):	Sorting by size ratios
TYPE OF MATERIAL (NIR):	Sorting by material to remove contaminants or to get specific products
DENSITY (XRT):	Sorting by X-ray transmission to remove contaminants and to get concentrates with higher quality



MULTIWAY SORTING SYSTEMS



MULTIWAY SORTING SYSTEMS

- Up to six-way sorting
- Lighting and sensor systems for reflection processes: NIR
- Sorting widths up to 2000 mm
- Grain sizes from 50 to 350 mm

APPLICATIONS

- Packaging waste from household and commercial waste
-

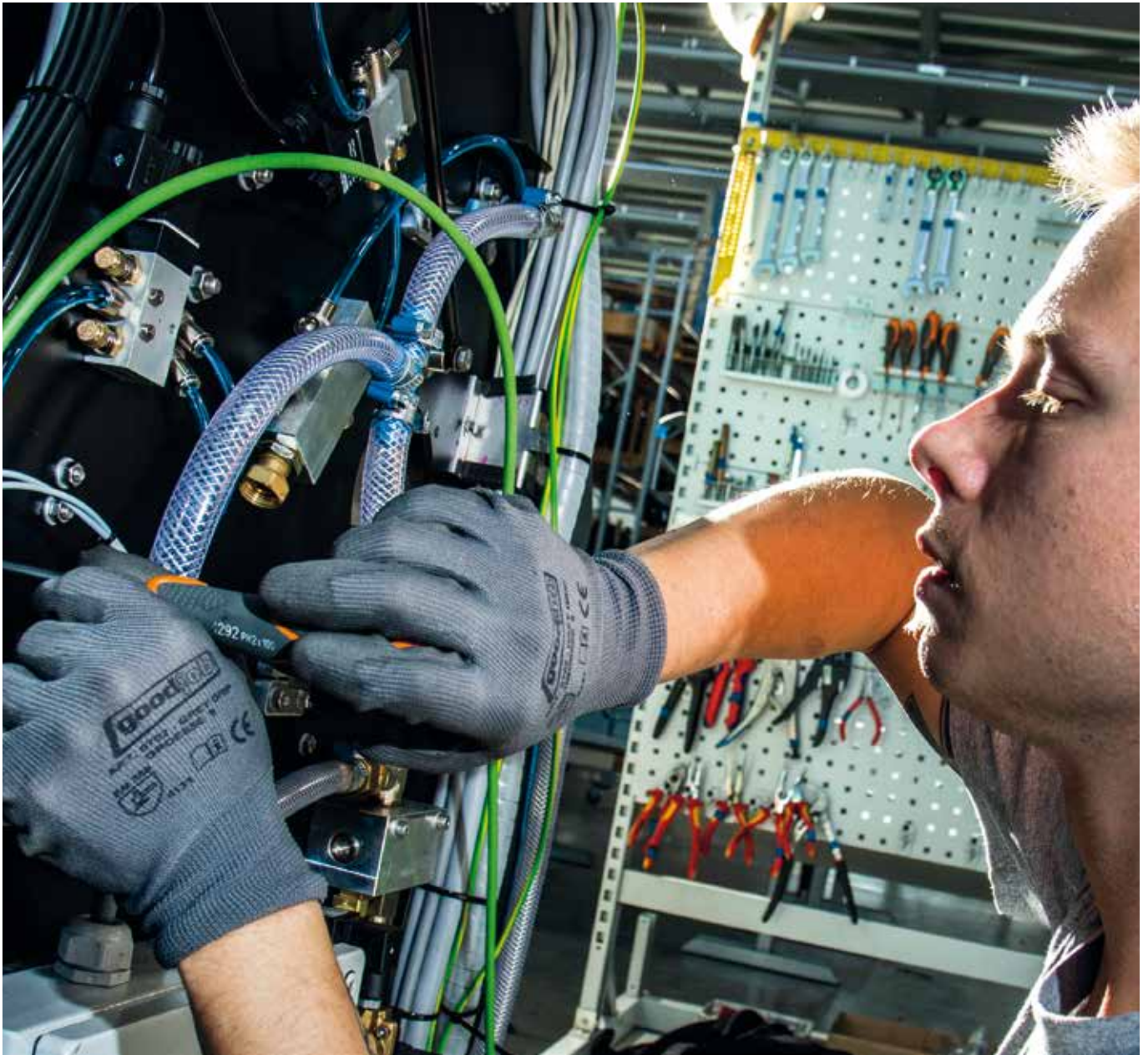
SORTING BY

COLOR (VIS):

Sorting by color to get different color grades and products
Removal of contaminants and impurities

TYPE OF MATERIAL (NIR):

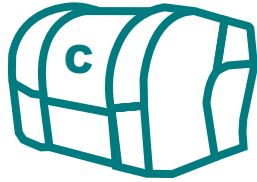
Sorting by material to remove contaminants or
to get specific products



OUR AFTER SALES SERVICE

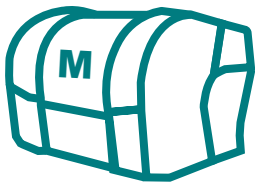
- *Fast spare parts supply through efficient shipping logistics*
- *Prompt repair and regular maintenance for the continuous optimization of machine performance and to ensure ongoing reliable operation*
- *Extensive assistance and advice*
- *24/7 service hotline for fast problem-solving*
- *Training in operation and maintenance*

WE PROCESS THE FUTURE



CLARITY

is a line of sensor-based sorting systems for raw materials processing. CLARITY sorts very nearly everything - cullet, plastics, paper, electronic waste, household and commercial waste, C&D waste, wood, metals, slag and refuse-derived fuels.



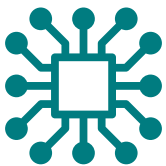
MINEXX

is our sorting system for raw materials processing. MINEXX is used for the sensor-based sorting of industrial minerals (like limestone, quartz, magnesite and talc), ores, salt, coal and gems.



PIONEERING

Binder+Co developed the world's first three-way system for the simultaneous sorting of glass cullet by color and contaminants. We repeatedly demonstrate our capabilities, not just in machine development but also in market development – for the first time, Binder+Co sorting machines are in use in China, South Africa and Argentina for processing cullet.



VERSATILE

We offer the right sorting system for any task, with chute sorters as 2- and 3-way systems, belt sorters as 2-way systems, or the CLARITY multiway for up to 6-way sorting.

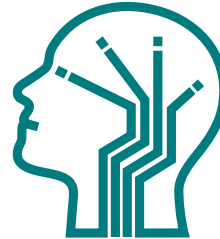


PRIZE-WINNING

We were awarded the Austrian Republic Innovation Prize for the development of cut-off technology for sorting glass ceramics. CLARITY separates heat-resistant and leaded glass with a combination of visible light and UV camera technology.

INTELLIGENT & CUSTOMIZED

Binder+Co configures the sensor suites of its systems to customer requirements. Available sensors include color and UV, near-infrared spectroscopy and X-ray transmission processes. The sensors work in combination, and the data they provide is linked and assessed by proprietary algorithms. This enables simultaneous sorting by material and color.



ACCESSIBLE

CLARITY and MINEXX feature easy access for maintenance and function checks, with swivelling camera compartment, valve panels and lighting. Our sorting systems can be remote-maintained by modem and data line for fast, cost-effective maintenance.



PRECISION AT HIGH SPEED

Binder+Co sorting systems work with market standard valves as well as with proprietary high-speed valves. The high-speed valves are installed with the shortest distance to the objects, for high-precision ejection. Valves can be replaced individually or in blocks of up to 32 valves.



FINE - FINER - BINDER+CO

The latest generation CLARITY and MINEXX machines sort raw materials and recyclables in a grain range of 1 to 15 mm. This ensures higher product yields from fractions that previously were processable only to a limited extent.



HIGHEST QUALITY IN THE SORTING OF RAW MATERIALS AND RECYCLABLES

WE PROCESS THE FUTURE

BAGGING • PALLETIZING

Bagging is necessary for the practical handling, transportation and storage of bulk materials. Naturally it must be efficient in terms of operating costs. Statec Binder offers bagging and palletizing systems for many industries and many different types of bags.



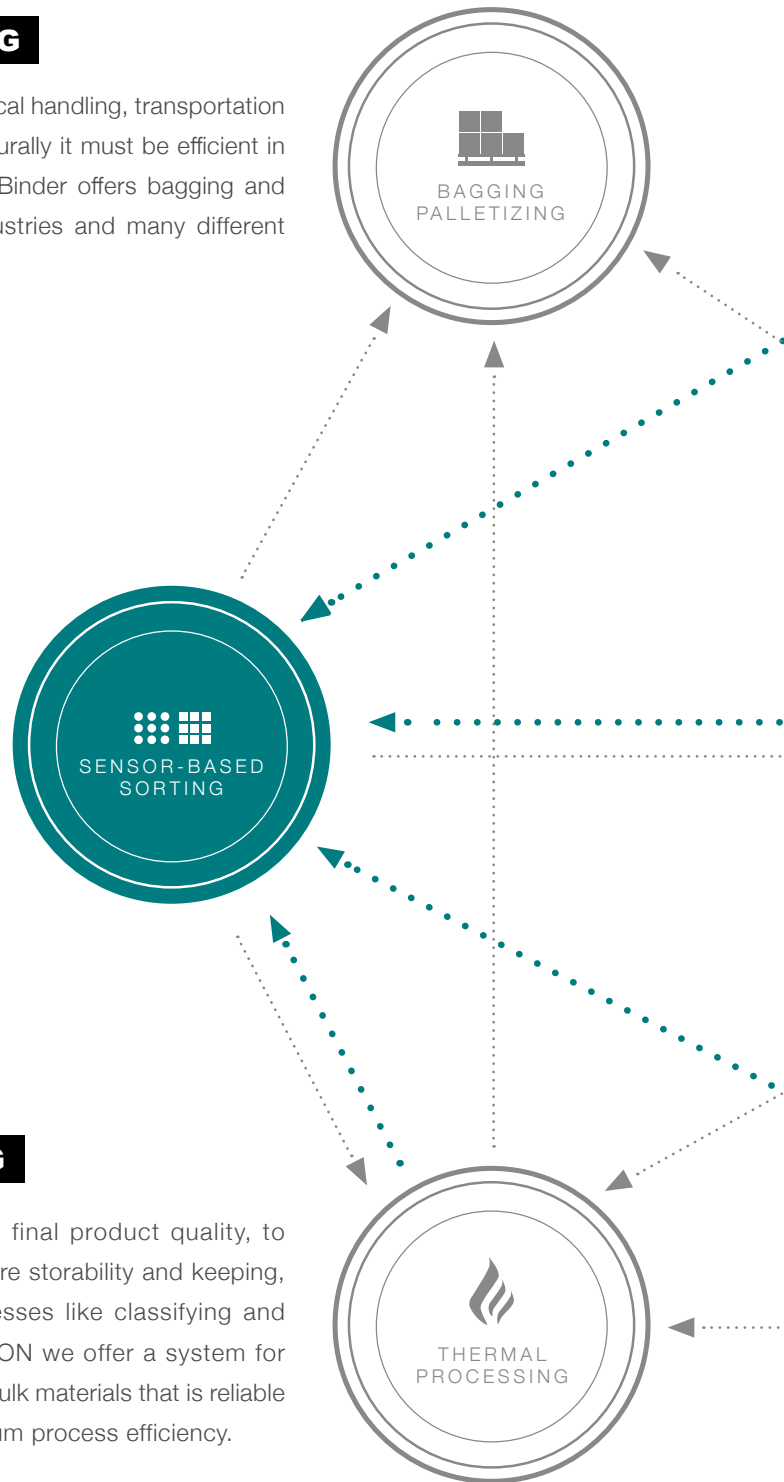
SORTING

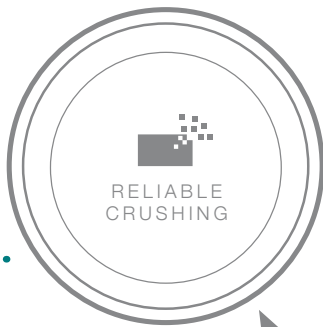
In recycling, sensor-based sorting is a necessary and established process step for generating high-quality secondary raw materials and reducing landfill volumes. It has also become essential in the raw materials industry, to reduce the burden on downstream processes, cut operating costs and ensure high product quality. With CLARITY and MINEXX, Binder+Co offers sensor-based sorting systems that cover a wide range of applications in the raw materials and recycling industries.



THERMAL PROCESSING

Drying is a prerequisite for high final product quality, to reduce transportation costs, ensure storability and keeping, and facilitate downstream processes like classifying and sensor-based sorting. With DRYON we offer a system for thermal processing of all kinds of bulk materials that is reliable and easy on products, for maximum process efficiency.





CRUSHING

Crushing is a fundamental step in processing bulk goods. The right granular size is critical for downstream processes. With Comec-Binder impact and jaw crushers we have the right machine for any kind of stone. Roll crushers are used primarily in glass recycling and for special applications in the industrial minerals industry.



SCREENING

The screening step is responsible for getting the right particle size separation. This is critical for product quality, and for downstream processes like sensor-based sorting. Binder+Co has proven its expertise in this field for decades with a wide range of circular and linear screens, resonance screens and the BIVITEC flip flow screens.



WET PROCESSING

Machines and system solutions for dewatering, cleaning and contaminant removal not only make a big difference in the quality of the end product, but also on subsequent processes such as sensor-based sorting. For example, log washers are used in the glass recycling to gently remove adhesions and labels from the cullet.

With our extensive knowledge and broad product portfolio, Binder+Co can provide optimum system designs for good input material conditioning, giving our clients a competitive and technical edge.

WE PROCESS THE FUTURE

BINDER+CO IN

AUSTRIA

binder+co

MANUFACTURING
SALES
AFTER SALES
R&D

PROCESSING STEPS:



RELIABLE
CRUSHING



EFFICIENT
SCREENING



WET
PROCESSING



THERMAL
PROCESSING



SENSOR-BASED
SORTING



MANUFACTURING
SALES
AFTER SALES

PROCESSING STEPS:



BAGGING
PALLETIZING

bublon

MANUFACTURING
SALES
AFTER SALES

PROCESSING STEPS:



THERMAL
PROCESSING

BINDER+CO IN

USA

binder+co

BINDER+CO USA INC.

SALES
AFTER SALES

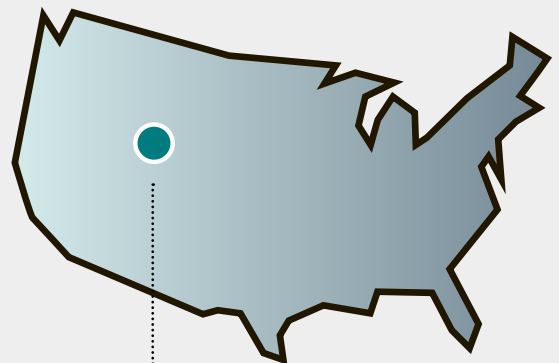
PROCESSING STEPS:



THERMAL
PROCESSING



SENSOR-BASED
SORTING



DENVER, USA



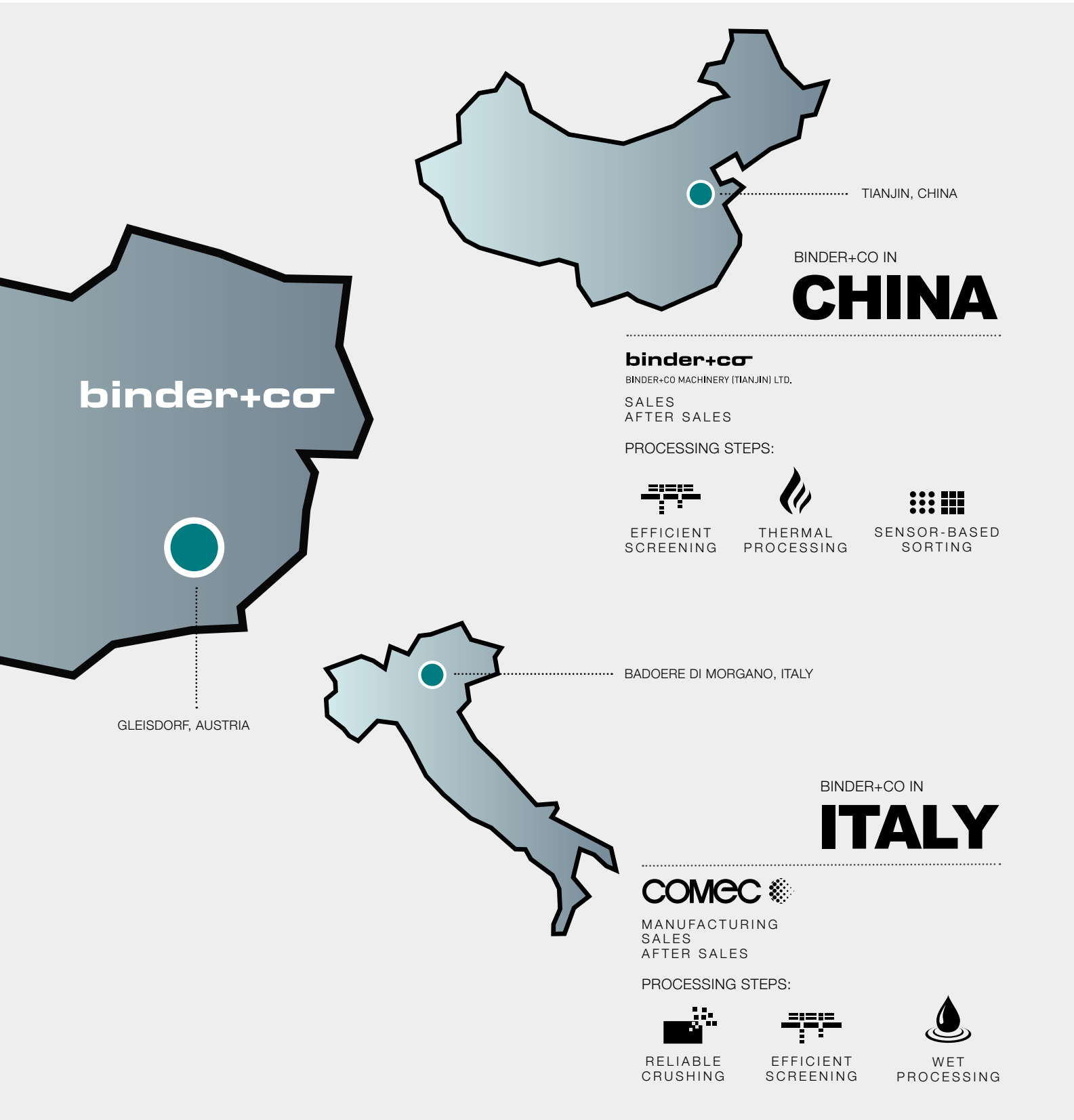
24/7

SERVICE HOTLINES


AUSTRIA: + 43-3112-800-200

USA: +1-720-577-1925

AT YOUR SERVICE



BINDER+CO GROUP WORLDWIDE



binder+co


Binder+Co AG


Grazer Straße 19-25, 8200 Gleisdorf, Austria

Tel.: +43-3112-800-0*

office@binder-co.at

www.binder-co.com

 **24/7 Service Hotline Austria: +43-3112-800-200**

 **24/7 Service Hotline USA: +1-720-577-1925**